

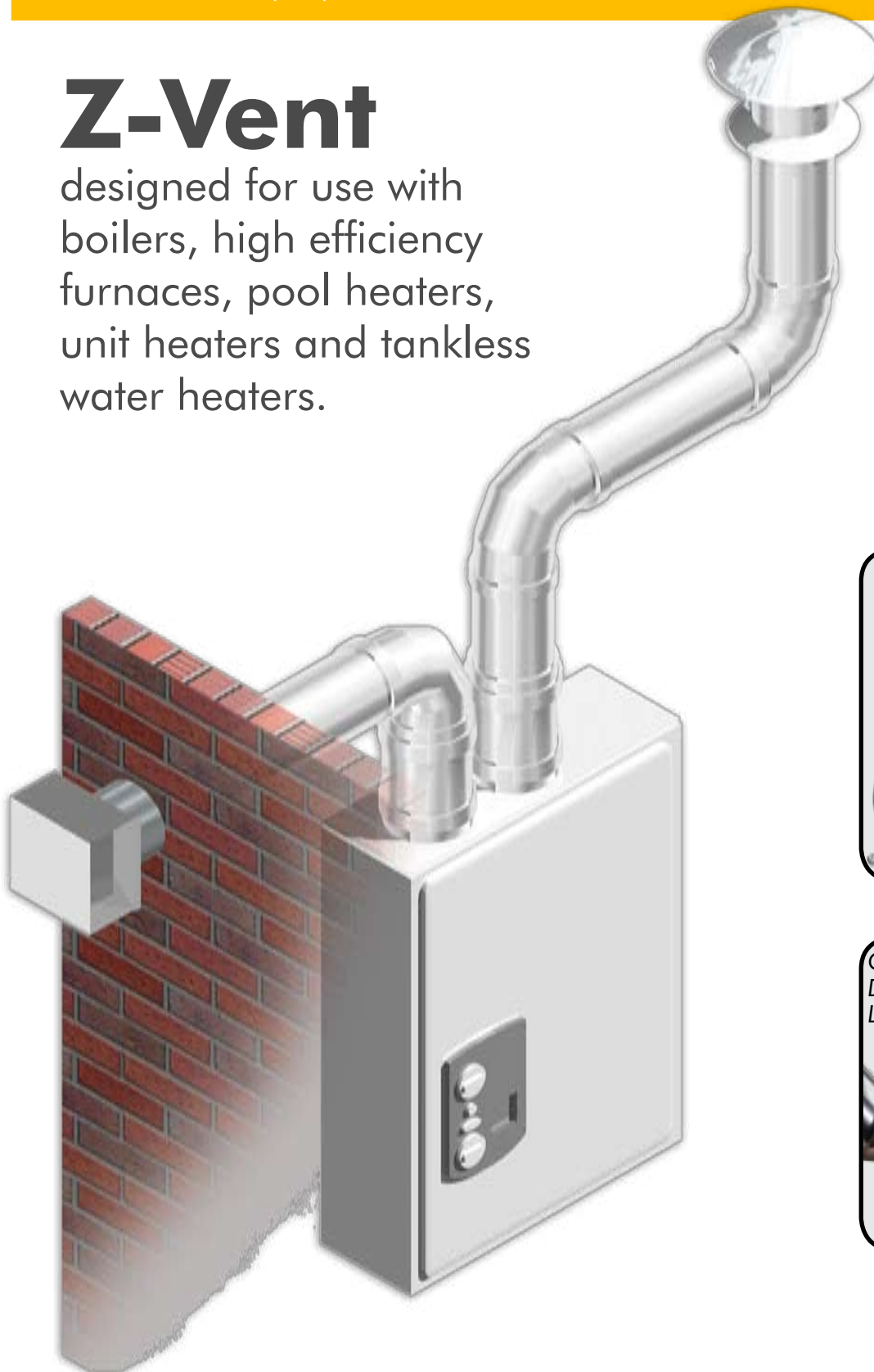
# Z-Flex

Available in  
sizes 3" to 24"  
single and double wall

SPECIAL GAS VENT FOR  
CATEGORY II, III, IV HEATING EQUIPMENT

## Z-Vent

designed for use with  
boilers, high efficiency  
furnaces, pool heaters,  
unit heaters and tankless  
water heaters.



CUT TO  
LENGTH  
IN THE  
FIELD



GAS-TIGHT  
DOUBLE  
LIP SEAL

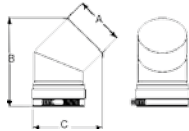


**Z-Vent** is manufactured using AL29-4® advanced ferritic stainless steel\*\* with unmatched corrosion resistance for use with condensing furnaces and boilers. Z-Vent was developed in the early 1980's and has thousands of field installations to date. Z-Vent is now manufactured utilizing a fail-safe gasket connection. No sealant required.

The lengths of pipe may be cut on non-expanded end using aviation snips or a hacksaw (24tpi). The cut end must be filed or sanded smooth before joining.

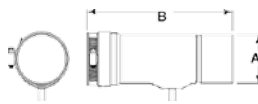


**45 DEGREE ELBOW**



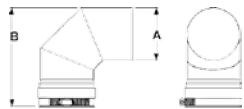
Catalogue No	Size	A	B	C
02SVEEWC0345	3"	3"	8.25"	5.5"
02SVEEWC0445	4"	4"	7"	5.7"

**HORIZONTAL DRAINPIPE**



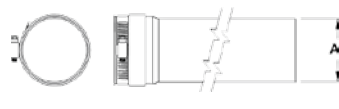
Catalogue No	Size	A	B
02SVEDWC	3"	3"	8.5"
02SVEDWC	4"	4"	10.5"

**90 DEGREE ELBOW**



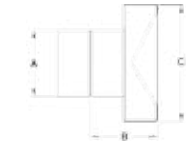
Catalogue No	Size	A	B	C
02SVEEWC0345	3"	3"	8.25"	5.5"
02SVEEWC0445	4"	4"	7"	5.7"

**GAS VENT PIPE**



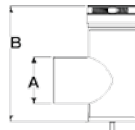
Catalogue No	Size	A
02SVPWC03	3"	3"
02SVPWC04	4"	4"

**WALL TERMINATION**



Catalogue No	Size	A	B	C
02SVSRTX03	3"	3"	4"	5"
02SVSRTX04	4"	4"	4"	6"

**VERTICAL DRAIN/TEE**



Catalogue No	Size	A	B
02SVEVWC03	3"	3"	7.5"
02SVEVWC04	4"	4"	7.5"

**Features:**

- Gasketed connections
- The highest pressure rating in the industry
- Fusion welded pipe seams
- The only metallic special gas vent than can be cut to length on site
- 1" clearance to combustibles

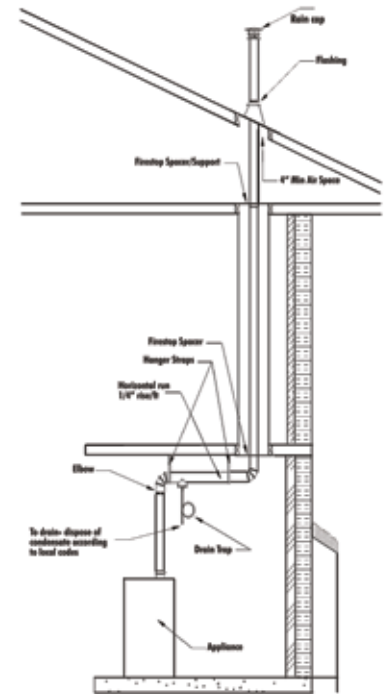
**Benefits:**

- No sealant required. Immediate start up, no call backs
- More than 3 times the industry standard
- Provides an air-tight seam, smooth finish and a better fit
- Being able to cut the product in the field will save you time and money. Pipe available from 6" through 10"
- Can be installed with minimum clearance to combustibles

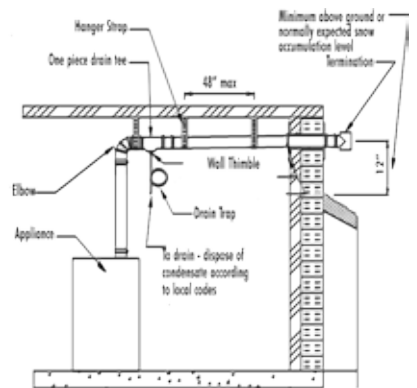
Appliance connectors available for most equipment. Please refer to price guide

**Typical Installations**

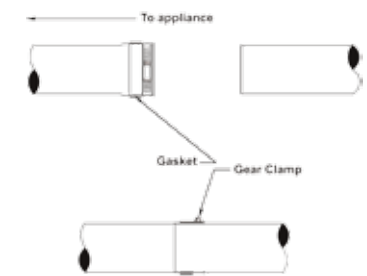
**Vertical Detail**



**Side Wall Detail**



**Joint Detail**



\*All drawings are for illustrative purposes only. Please refer to guide for specific U.L. installation instructions. Always defer to local building codes.  
 \*\* AL29-4C is a registered trademark of Allegheny Ludlum Steel Corporation

**U.S.A.**  
 20 Commerce Park North, Bedford, NH 03110-6911  
 Tel: 603.669.5136 1.800.654.5600 Fax: 1.888.889.3539

**CANADA**  
 452 Attwell Drive, Etobicoke, ON M9W 5C3  
 Tel: 416.679.0045 Fax: 416.679.0051



Email: sales@z-flex.com  
 Web site: www.z-flex.com